

PIER VITTORIO AURELI *PICCOLOMINI*

Piccolomini Series

These pastels on paper are part of a large series developed during several years; in essence, they are landscapes. They play with the most fundamental datum of the landscape genre, which is the horizon line. In painting, the horizon line is the axis through which, in the last six centuries, every Western depiction of space has been constructed. The horizon line is the most artificial and arbitrary datum through which we produce representations of space, and yet it has become one of the most potent means of naturalizing our perception of space.

All the conflicts, cracks, and contradictions that have produced the land as we see it are subsumed and equalized by the establishment of the horizon line.

For centuries the horizon remained hidden behind elaborate compositions. It was only in 17th century Dutch and Flemish landscape painting that the horizon line was made visible as the most explicit feature of the painting itself. In the paintings of Jan Porcellis, Jacob van Ruisdael and Pieter Snayers, the horizon becomes so overwhelming that it completely subsumes the vanishing point and any compositional feature that is not just the axis of the horizon.

The Piccolomini pastels on paper push to the extreme this logic of the horizon and as such they attempt to offer a final meditation on the very tradition of landscape painting at the moment in which this genre has been abandoned by artists and is seen as outmoded and romantic.

The series is named after general Ottavio Piccolomini for whom the Flemish baroque painter Pieter Snayers painted several battle scenes among which one of the most striking landscapes ever conceived – The Battle of Lützen (1632) – a painting that might have inspired one of the greatest paintings of the 17th century: Diego Velasquez's Surrender of Breda (1634).

— Pier Vittorio Aureli, 2017





Untitled
2017
pastel on paper
65 x 50 cm
(framed 69.5 x 54.8 cm)



Untitled
2017
pastel on paper
21 x 14.8 cm
(framed 24.5 x 18.5 cm)

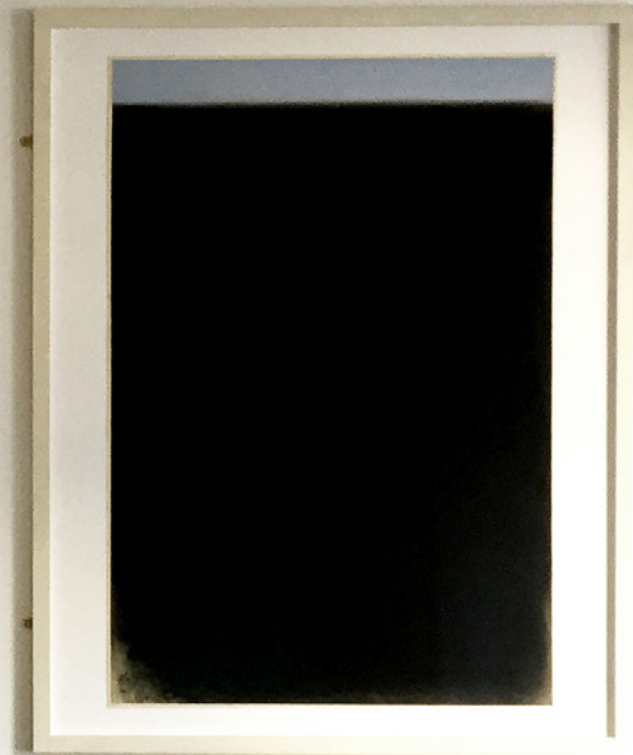




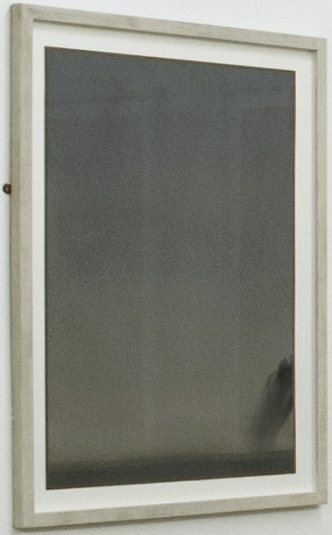
Untitled
2017
pastel on paper
42 x 29.7 cm



Untitled
2017
pastel on paper
110 x 75 cm



Untitled
2017
pastel on paper
110 x 75 cm
(framed 125 x 100 cm)





Untitled
2009
pastel on paper
65 x 50 cm
(framed 75.5 x 61 cm)





Untitled
2009
pastel on paper
65 x 50 cm
(framed 75.5 x 61 cm)



Untitled
2009
pastel on paper
65 x 50 cm
(framed 75.5 x 61 cm)



Untitled
2009
pastel on paper
65 x 50 cm
(framed 75.5 x 61 cm)





Untitled - Square series
2015
pastel on paper
50 x 50 cm



Untitled - Square series
2015
pastel on paper
50 x 50 cm
(framed 61 x 61 cm)



Untitled - Square series
2015
pastel on paper
50 x 50 cm
(framed 61 x 61 cm)



Untitled - Square series
2015
pastel on paper
50 x 50 cm
(framed 61 x 61 cm)

Untitled - Square series
2015
pastel on paper
50 x 50 cm
(framed 61 x 61 cm)





Untitled - Square series
2015
pastel on paper
50 x 50 cm
(framed 61 x 61 cm)



Untitled
2017
pastel on paper
42 x 29.7 cm
(framed 49.5 x 37 cm)





Untitled - A4 series
2017
pastel on paper
29.7 x 21 cm
(framed 35.3 x 26.5 cm)



Untitled - A4 series
2017
pastel on paper
29.7 x 21 cm



Untitled - A4 series
2017
pastel on paper
29.7 x 21 cm
(framed 35.3 x 26.5 cm)



Untitled - A4 series
2017
pastel on paper
29.7 x 21 cm
(framed 35.3 x 26.5 cm)



Untitled
2017
pastel on paper
42 x 29.7 cm
(framed 49.5 x 37 cm)

BETTS PROJECT

100 CENTRAL STREET

LONDON EC1V 8AJ

HELLOBETTSPROJECT@GMAIL.COM

WWW.BETTSPROJECT.COM

+44 (0)7 9090 70 611